

The logo for Everson Spice Co. features the word "EVERSON" in a bold, serif font above "Spice CO." in a cursive font, with a small teapot icon below. The logo is set within a white, ornate frame with a purple border.

EVERSON
Spice CO.

Spice up your life®

Seasonings For Every Marketing Application



Food Service



Industrial



Retail

- Seasonings
- Dry Rubs
- Marinades
- Batters
- Glazes
- Gravies

- Sauces
- Soup Bases
- Salt Free
- Stuffings
- Breadings
- Sausage
- Rice
- & MORE!



**CUSTOM R & D
RECIPE CREATION
CORPORATE CHEF
FORMULA DUPLICATIONS
INNOVATIVE FLAVOR IDEAS**



With Everson Spice Co., you can guarantee the perfect recipe each time. We pride ourselves on being able to provide consistency & quality in our products.

We provide a variety in pack size, from 5g to 50lb bulk, helping us tailor to the individual customer needs. We also offer a 100lb minimum order.



At Everson Spice, Support means more than just selling you the Product...

WE HELP YOU DEVELOP NEW PRODUCT.

Our R&D department & Corporate Chef are at your service for any new flavor development. Let us help you create your own unique flavor.



The Everson Spice Success-Proven Training & Merchandising Program:

- Product Training Seminars
- Local Broker Support
- Recipe Page Development
- Labels (in-case pack)
- Customized Store Manuals

With over 30 years of experience & more than 4,000 recipes, Everson Spice is the right choice for you!

- Gourmet Burger Programs
- Slider Programs
- Sausage Programs
- Hispanic Seasonings
- Deli & Chef Programs
- Seafood Programs
- Meat Programs
- & More!



Gourmet Burger Programs

- 100-553 Bacon Cheddar
- 300-240 California Garlic & Pepper
- 100-608 Burgundy Pepper
- 100-552 Jalapeno
- 101-012 Black & Bleu w/ Bacon
- 101-013 Bacon Buffalo
- 101-022 Turkey Burger

Slider Program

- 100-522 Jalapeno Ground Beef
- 300-093 BBQ Pepper Medley
- 100-558 Sante Fe Burger
- 100-042 Supreme Pepper
- 100-203 Teriyaki Burger
- 100-557 Italian Burger
- 900-123 Cajun Burger

Sausage Stuffers

5850606
12 lb. Sausage Stuffer with
Stainless Steel cylinder and base
plate with four stuffing tubes.

7132004
15 lb. Sausage Stuffer 16" x 10
1/2" x 19 1/2" with three stuffing
tubes (1 1/16", 7/8" and 1 1/4")



5850606



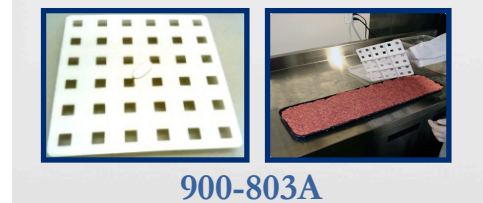
5850606

Sausage Programs

- 100-008 Sweet Italian Sausage
- 100-351 Chicago Red Italian Sausage
- 100-017 Fresh Polish Sausage
- 100-018 Fresh German Bratwurst
- 100-034 Texas Style Chorizo
- 100-995 Blueberry Maple Breakfast
- 100-694 Spinach & Feta Sausage

Equipment

- 1700070 8 mold burger board
- 900-803A 36 mold Slider Cutter



900-803A



#1700070



Hispanic Seasonings

Seasonings for Rotisserie

300-287	Carmen's Pollo Seasoning
300-398	Sazon Supreme
300-242	Hot Adobo Seasoning

Hispanic Sprinkles

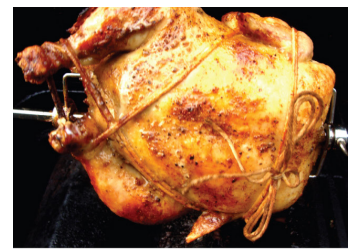
300-278	Fajita Seasoning
300-359	Green Chili Sprinkle
300-365	Sazon Cilantro Y Achiote Sprinkle
300-289	Carmen's Carne Asada Sprinkle
300-693	Hatch Green Chili

Marinades

100-087	Cinco de Mayo Taco Marinade
100-348	Trinis Adovado Marinade
100-069	Puebla Fajita (Beef) Marinade
900-258	Carne Asada LIQUID Marinade

Breadings

500-112	Pan Rayado Sazonado
500-001	Mr. Pig Chicken Breeding



Deli & Chef Programs

Rotisserie Programs

300-001	Mr. Pig BBQ Spice
300-240	California Garlic & Pepper
300-287	Carmen's Pollo Seasoning
900-116	Seasoned Lemon Pepper
100-020	Prime Roast Seasoning
300-488	Asian BBQ Rub
400-038	Texas Hot & Smokey BBQ Marinade
300-470	Hot Buffalo Style Seasoning
300-273	Rosemary & Garlic Seasoning

Chip Seasonings

300-032	BBQ Potato Chip Seasoning
300-101	Lime & Jalapeno Potato Chip Seasoning
300-150	Salt & Vinegar Potato Chip Seasoning
300-484	Chile Con Limon Tortilla Chip Seasoning

Hot Food Programs

100-106	Gourmet Meatloaf Mix
100-105	Sesame Ginger Marinade
500-018	Southern Style Cornbread Stuffing
500-144	Mexican Cornbread Stuffing
500-024	Cranberry Walnut Stuffing
400-029	Cream Soup Base
300-038	Spanish Rice Pilaf
300-173	Oriental Rice Pilaf
300-120	Wild Rice Medley Rice Pilaf
100-553	Bacon Cheddar Burger Seasoning
100-608	Burgundy Pepper Burger Seasoning
100-203	Teriyaki Burger Seasoning
100-558	Santa Fe Burger Seasoning
300-130	Garlic & Herb Snake Seasoning

Seafood

Seafood Marinades

- 100-022 Lemon Dill Marinade
- 100-059 Cajun Marinade
- 400-134 Lemon Pepper
- 100-101 Sherrywine Teriyaki Marinade
- 300-033 Pollo Santa Cruz Marinade
- 100-105 Sesame Ginger Marinade
- 100-421 Korean Style Marinade

Seafood Seasonings

- 300-058 BBQ Pepper Medley
- 300-240 California Garlic & Pepper
- 300-273 ESC Rosemary Garlic Sprinkle
- 900-116 Seasoned Lemon Pepper
- 900-123 Cajun Seasoning



Seafood Breadings & Batters

- 500-171 Coconut Macadamia Panko
- 900-133 Fish & Chips Batter Mix
- 900-132 Tempura Batter Mix
- 900-131 Cajun Batter Mix
- 900-130 Beer Batter Mix



Meat Program

Seasonings Sprinkles & Dry Rubs

- 551-581 Spatch Chicken Rub
- 300-593 Peppercorn Sea Salt
- 100-020 Prime Roast Seasoning
- 300-385 Herb Crust Seasoning
- 300-249 California Garlic Medley
- 100-042 Supreme Pepper Seasoning
- 300-232 Savory Monterey Seasoning
- 559-777 Ethiopian Berbere Seasoning
- 300-011 Tandoori Rub
- 300-093 BBQ Pepper Medley Rub
- 300-325 Sweet Bourbon Sprinkle

Liquid Ready-To-Use Pouch Marinades

- 900-258 Carne Asada Marinade
- 900-402 Traditional Teriyaki Marinade
- 900-404 Louisiana Cajun Marinade
- 900-405 Herb & Garlic Marinade
- 900-407 Sweet Chili Ginger Glaze
- 900-408 Santa Cruz Lime Marinade
- 900-409 Asian Black Pepper Glaze
- 900-410 Garlic Lemon Marinade

Tumbler Marinades

- 800-082 Dixie's Herb & Garlic
- 800-081 Mesquite
- 800-079 Lemon Pepper
- 800-116 Tumbler Teriyaki
- 800-018 Greek's Delight
- 800-055 Santa Cruz with Lime
- 800-049 Louisiana Cajun
- 800-116 Helen's Teriyaki Marinade



Fully Cooked Rice Pilafs

Easy-to-Use Zipper Bag (hydrate with cold water in the bag)

Writable panel on back for Dating & Inventory Control

Perfect for...

- Value-Added Programs
- Cook-in-Bag Entree Programs
- Side Dish for Deli Programs

- 300-224 Spanish Rice Pilaf
- 300-173 Oriental Rice Pilaf
- 300-120 Wild Rice Pilaf
- 300-036 Rice Pilaf
- 300-909 Curry Rice Pilaf
- 300-906 Clean Label Rice Pilaf
- 300-905 Clean Label Spanish Rice Pilaf



EVERSON
Spice^{co}



TERMS AND CONDITIONS

How to Order

PBI will accept orders by mail, telephone or telefax. Be sure to give catalog item number and full description. Quantity discounts available. State size of garment; give voltage, phase and cycle for electrical equipment. Orders subject to the availability of merchandise.

PBI's goal is complete customer satisfaction.

Delivery Facilities

We ship United Parcel Service to most local areas, also common carrier or parcel post. We will ship at our own discretion unless specified by the customer.

United Parcel Service: Limit 150 lbs. per package, measuring 108" length and girth. Service Area: 48 states plus certain cities in Hawaii, Alaska, Canada and Mexico. International service also available.

Parcel Post: Limit is 70 lbs. to 2nd, 3rd and 4th class Post Offices, not to exceed 108" length and girth (includes APO and FPOs). First Class Post Offices 70 lb. limit, not exceeding 108" length and girth.

Freight Shipments: Freight shipments will go common carrier with no minimum weight requirements.

Air Shipments: Air freight, air express and air parcel post are available. High cost of shipping by air can be offset by lighter crating requirements and port forwarders fee. Air parcel post for light packages. Be sure to give name of airport to which shipment is to be flown.

Terms

Many customers have established credit with PBI. Shipment is made with understanding that bills will be paid within 30 days. C.O.D. shipments will be left to the discretion of Credit Department.



For your convenience we accept MASTERCARD, VISA, and AMERICAN EXPRESS. 3.5% Handling Fee

Prices

The prices shown in the catalog are to be used only as a reflection of market conditions at the time of publication and do not constitute an offer to sell at prices listed. Also, prices per item may be influenced by quantity involved. Please call or write us for a firm commitment. In the event of a price increase, customer will be notified before shipping. All prices are F.O.B. Long Beach, California unless otherwise specified. Prices do not include excise, sales tax, or taxable freight.

Damaged Shipments

Railroad, truck lines, or carrier are responsible for safe delivery of goods. They are obliged to make good any damage that takes place. **It is your responsibility to notify the carrier of any damage and file claim.** If you have trouble filing a claim we will help you. Regulations permit you to file a claim on concealed damage. Shortages or errors in shipment must be reported to us upon receipt to obtain adjustment.

Guarantee

We guarantee all items in this catalog to be correctly described and suitable for the purpose mentioned and free of defects, but our sole liability is to accept the return of the merchandise and refund the purchase price. No goods can be returned without PBI's written return goods authorization. We shall not be liable for any loss or damage directly or indirectly arising from the use of the merchandise or for consequential damages. PBI reserves the right to make changes at any time, without notice, in prices, materials, equipment, specifications and models, and also to discontinue models. **All items are subject to a 25% restocking charge.**

Prompt Shipment

Your orders will receive prompt attention. **Most supply orders are shipped within 24 hours.**

customerservice@pbimarketing.com

Call for PBI Service: (562) 595-4785 or (209) 839-9280 (Toll Free) 1-800-421-3753
