

Biro Tenderizers

The PRO-9 Series machines help merchandise product by adding value to less expensive, less desirable, and less tender products, thereby enhancing your profit margin.

- 7350030 1/2 HP or 3/4 HP, heavy duty,
115 to 140 RPM
- 7703001 Baffle



7350030

Add the Stew-Strip Cutting assembly, used for strip cutting beef and chicken stir fry products, or for fajitas and julienne for salads, beef jerky strips, and beef cubing for kabobs and stews.



7703130

- 77 03130 Stew-Strip Cutting Cradle

Biro Food/Patty Formers

- 4332000 Patty & Food Former,
130MM Diameter, 115v, w/ conveyor,
paper attachment, foot switch, lift handle.
43" x 23" x 28"
NSF approved.

**Great for Burgers,
Cutlets, Chicken Nuggets
& More!**



4332000

Gourmet Burger Programs

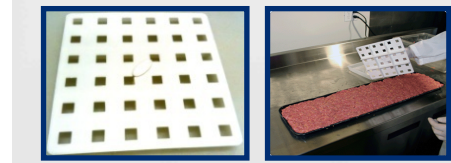
- 100-553 Bacon Cheddar
- 300-240 California Garlic & Pepper
- 100-608 Burgundy Pepper
- 100-552 Jalapeno
- 101-012 Black & Bleu w/ Bacon
- 101-013 Bacon Buffalo
- 101-022 Turkey Burger

Slider Program

- 100-522 Jalapeno Ground Beef
- 300-093 BBQ Pepper Medley
- 100-558 Sante Fe Burger
- 100-042 Supreme Pepper
- 100-203 Teriyaki Burger
- 100-557 Italian Burger
- 900-123 Cajun Burger

Equipment

- 1700070 8 mold burger board
- 900-803A 36 mold Slider Cutter



900-803A



#1700070



Sausage Programs

- 100-008 Sweet Italian Sausage
- 100-351 Chicago Red Italian Sausage
- 100-017 Fresh Polish Sausage
- 100-018 Fresh German Bratwurst
- 100-034 Texas Style Chorizo
- 100-995 Blueberry Maple Breakfast
- 100-694 Spinach & Feta Sausage

Sausage Stuffers

5850606

12 lb. Sausage Stuffer with Stainless Steel cylinder and base plate with four stuffing tubes.

7132004

15 lb. Sausage Stuffer 16" x 10 1/2" x 19 1/2" with three stuffing tubes (1 1/16", 7/8" and 1 1/4")



5850606

